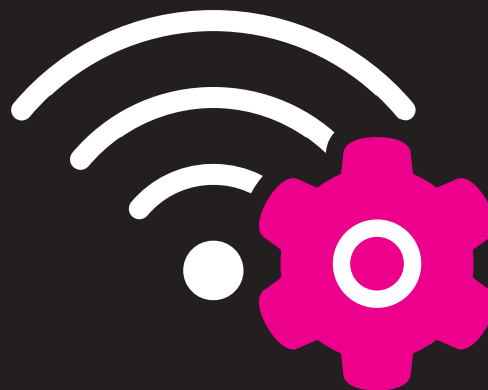


# TIME Managed WiFi



TIME Managed WiFi is a fully managed, end-to-end solution that combines a private wireless network for employees and a public Wi-Fi network for visitors or guests.

This customisable WiFi solution provides scalable floor coverage to suit everything from single-floor to multiple-site premises. A lease-to-own monthly subscription format helps you save on upfront costs, and we take care of the network management and monitoring so you can concentrate on your business.

This is a value-added service for TIME Internet Direct.

**Connectivity**  
1800-18-2828 | [www.time.com.my](http://www.time.com.my)

**TIME**<sup>TM</sup>

# Key Features



## Access Point (AP)

Allows a WiFi user or device to connect to the Internet or local area network.



## Access Controller

Provides the AP with its configuration and consolidates management for the entire WiFi network. Can be cloud-based or on-premises.



## Networking

Provides local area network connectivity for the AP within the customer's premises.



## Software and Licenses

Allows the use of and access to the related Wi-Fi management systems.



## Self-Service Portal

Allows the self-management of specific tasks such as changing WiFi settings and capturing user insights.



## Managed Services

Provides expertise in planning, designing and installing Wi-Fi equipment as well as 24/7 monitoring, reporting and technical support.

# Key Benefits

## 2-in-1 WiFi

- Separate wireless networks for employees and guests
- Configurable speed and concurrent connections for different user segments
- Scalable floor coverage according to premises size

## Fully Managed Network

- Full WiFi network management by TIME technical experts
- Single contact point for any queries or support requests

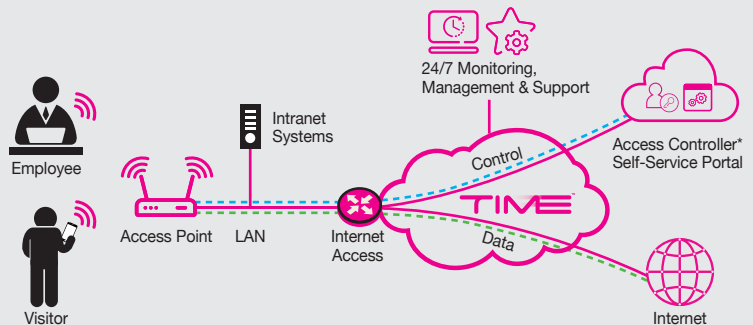
## Cost-Efficient

- Pay-as-you-grow model for reduced upfront CAPEX

## Flexible and Scalable

- Basic cloud deployment for fast turnaround time
- Options for advanced upgrade and Access Point (AP) add-ons

# Service Architecture



- Access Controller can be deployed in the cloud or kept on-premises
- TIME Managed WiFi must be purchased together with TIME Internet Direct.