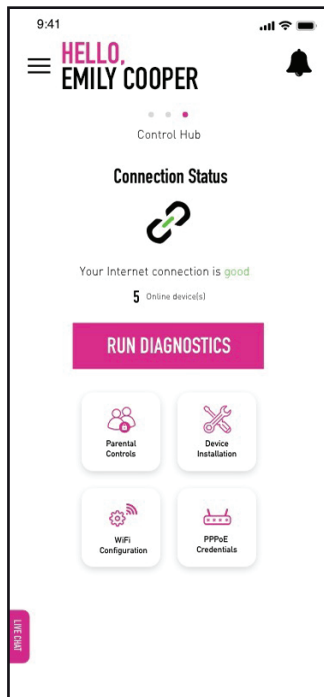


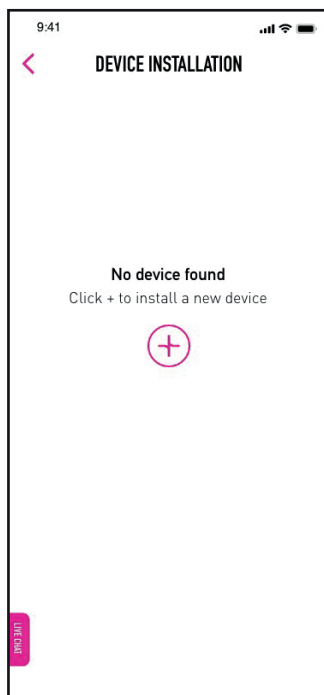
DEVICE INSTALLATION

HOW TO INSTALL NEW HUAWEI MESH DEVICES VIA THE TIME INTERNET APP

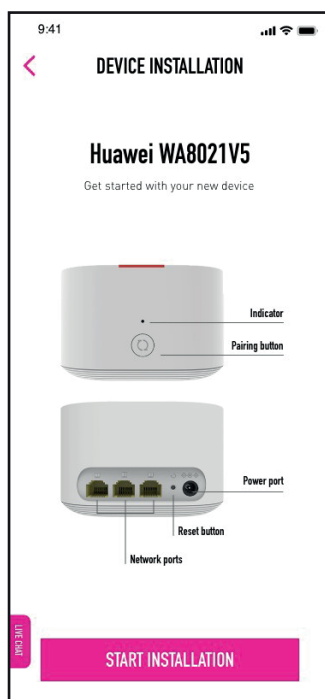
1. Tap on the **Device Installation** icon on the **Control Hub** screen in your TIME Internet app.



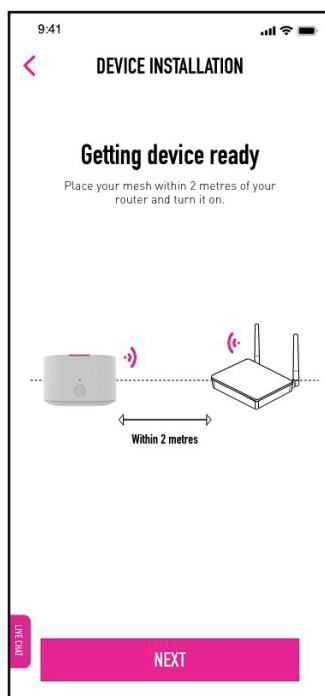
2. Tap on the + symbol to add a new device(s).



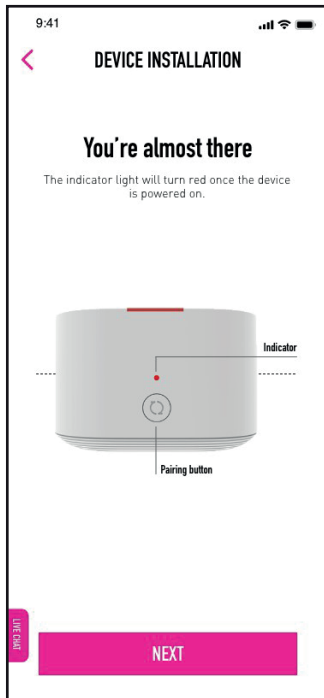
3. Tap on **Start Installation** to begin the process.



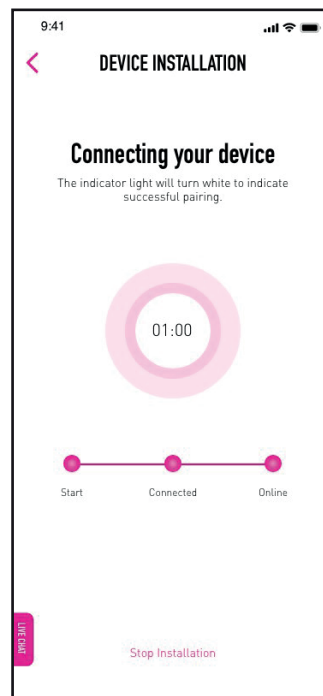
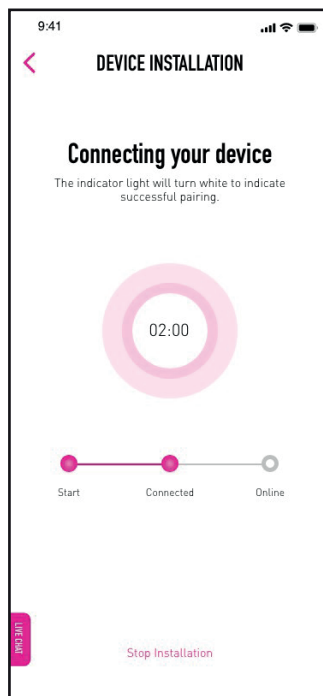
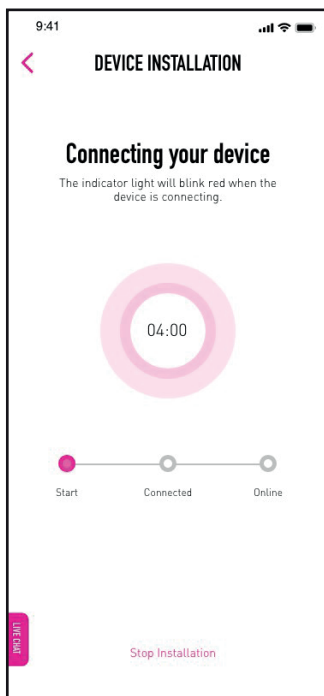
4. Ensure your device(s) is placed 2m from your router in order for it to be detected. Should you encounter any errors, simply follow the instructions on screen.



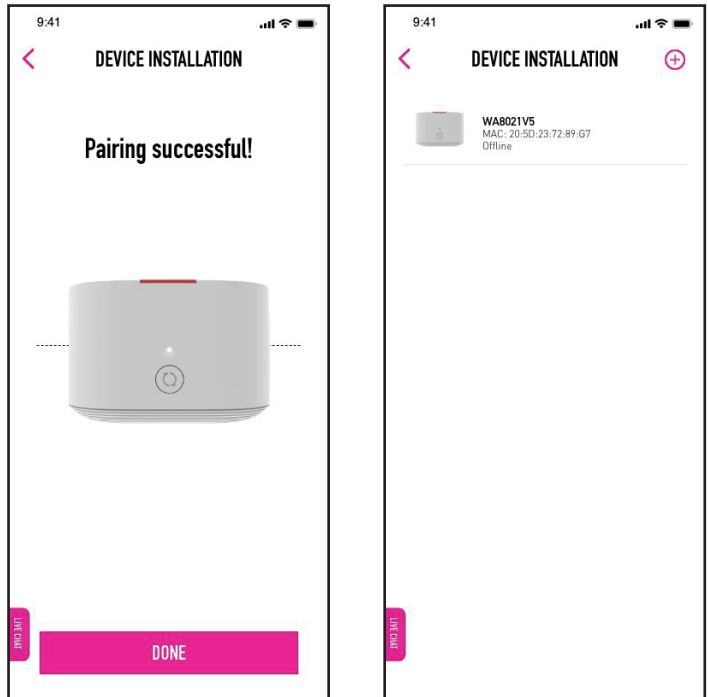
5. The indicator light on your device(s) will start to blink once the installation process begins. Tap on **Next** to proceed.



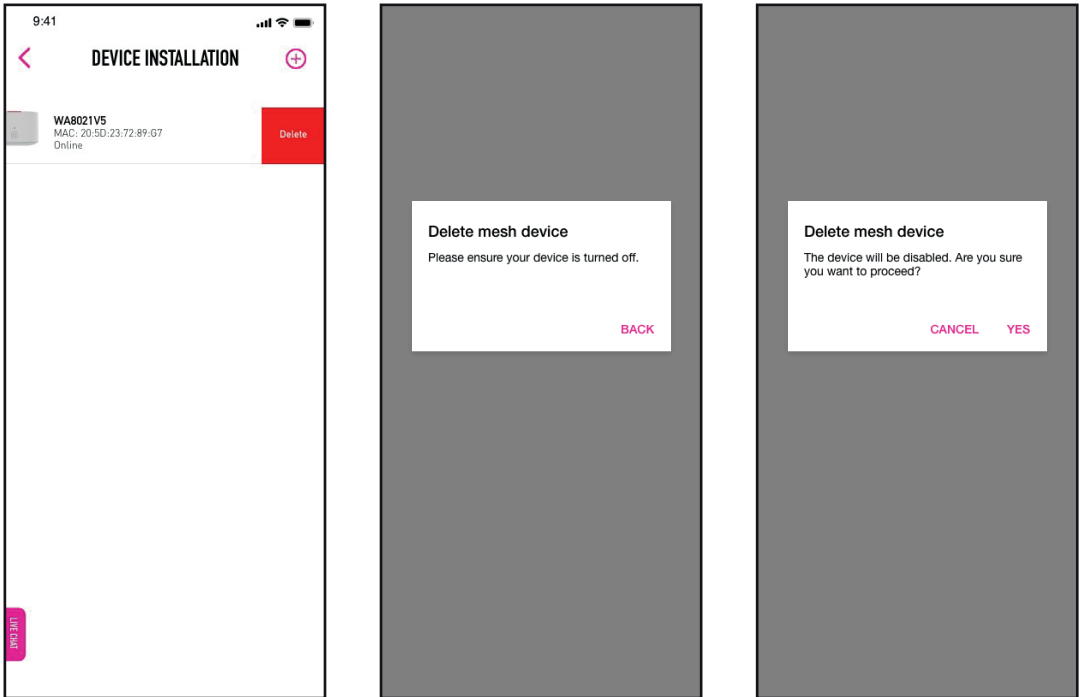
6. The app will start connecting your device(s). It will take approximately 4 minutes or less to complete the installation.



7. Once the process is complete, your device(s) will be ready for use. Tap on **Done** to finish.



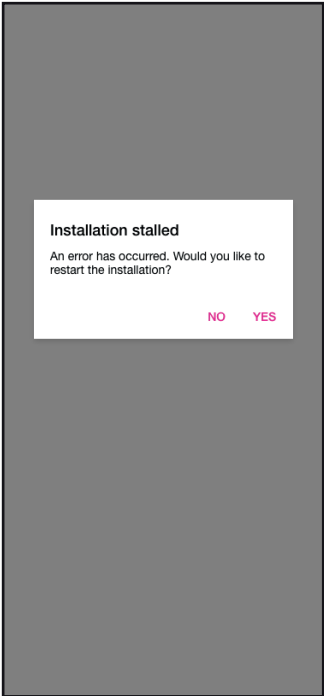
8. If you wish to delete your installed device(s), simply swipe left on the selected device and tap on **Delete**.



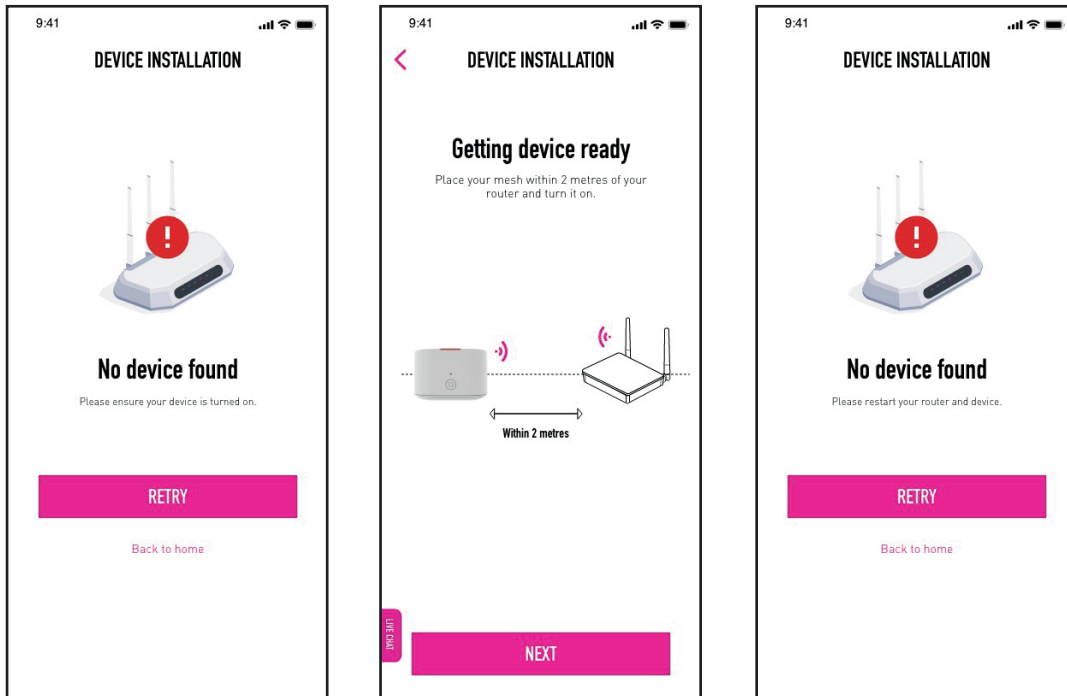
9. If you would like to stop the installation, simply tap on **Stop Installation**.



10. If the installation is interrupted midway, tap on **Yes** to restart the process.

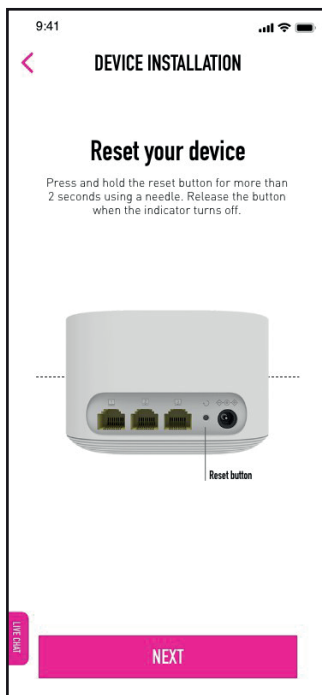


11. If the app fails to detect your device(s), ensure that it is powered on and placed within 2m of your router. Tap on **Retry** to start again.



12. If the app fails to detect your device(s) after two (2) attempts, reset your device following the steps below:

- a. Power off your device by unplugging it from the power socket.
- b. Using a needle or a thin piece of metal or plastic, hold the reset button for a few seconds.
- c. Release the button once the indicator light goes off.
- d. Tap on **Next** to proceed.



13. Plug your device back in to turn it on and tap on **Next**. This will take you back to the start of the installation process where you can try again.

