

DYNAMIC BANDWIDTH ALLOCATION

TIME BANDWIDTH ON DEMAND™



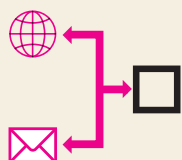
DYNAMIC BANDWIDTH PROVISIONING

TIME Bandwidth on Demand™

Today, even some of the service providers and enterprises that run on a consistent support of bandwidth throughout the year require additional bandwidth during certain periods. This results in paying for bandwidth that goes unused most of the time, and at the same time causing unnecessary cash outflow that can be utilised on other business agendas.

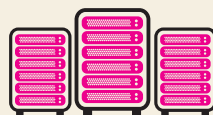
TIME Bandwidth on Demand™ (BoD) allows you to attain additional bandwidth without any hassles and complications by creating dynamic point-to-point circuits. By using this service, businesses don't have to design the networks any longer for peak bandwidth usage. You can set up the network for your average use, and then only provision the extra bandwidth you need for periodic and seasonal use.

TIME Bandwidth on Demand™ is applicable for Ethernet-based technology hence a subscriber of either TIME Private Leased Line™ or TIME Internet Direct™ can choose to opt for TIME Bandwidth on Demand™ and store it for later usage. With TIME Bandwidth on Demand™, you need not prepare any justification papers to get additional budget for last minute bandwidth purchase anymore.



Seasonal Network Congestion

For businesses that require additional bandwidth for planned business agendas i.e. increase in website traffic during peak periods for marketing efforts, high bandwidth usage during tax or other seasons.



Data Migration Scheduling

For businesses that are posed with possibilities of sudden bandwidth spikes over a scheduled timeline i.e. additional bandwidth required for an IT department to perform data migration from one data centre to another data centre.

KEY FEATURES & SPECIFICATIONS

Products Applicable	TIME Private Leased Line™ & TIME Internet Direct™
Platform	Only applicable for Ethernet-based technology
Plans Applicable	Basic Plan and Price Protection Plan
Minimum TIME PLL or TIME ID Bandwidth Subscription	> 10Mbps (except for both 100Mbps & 1Gbps bandwidth subscriptions)
Additional Bandwidth	Additional 20% bandwidth or maximum port capacity (whichever is lower)
BoD Provisioning	<ul style="list-style-type: none">• 4 blocks of additional bandwidth to be used anytime during the service period• Each block equals to 7 consecutive days of additional bandwidth utilisation
BoD Scheduling	7 days in advance
Subscription Fee	Additional one month advance fee based on TIME Private Leased Line™ or TIME Internet Direct™ monthly recurring charge
Contract Period	12 months